

EcoLet™ 25a/65a Service Manual (2022—)



Safety Notice

This appliance must only be installed, serviced, or repaired by a qualified electrician. Improper work may result in injury, damage, or fire.

Contents

Removing the top part.....	3
Removing the electrical panel	4
Replacing the fan motor.....	5
Replacing the mixer motor.....	6
Replacing the shear pin.....	7
Replacing the bottom heater	8

Safety Notice

This appliance must only be installed, serviced, or repaired by a qualified electrician. Improper work may result in injury, damage, or fire.

Removing the top part

Safety Notice

Before any service, the power must be disconnected.

1. Remove the screw on the back of the toilet holding the top part.



2. Remove the nut in front, under the toilet seat (holding the compost cover). Use a regular screwdriver. Pull off the knob, straight up.



3. Pull off the handle for the heat regulation on top. Lift the top part straight up.



4. When putting the top part back, make it gentle and straight down.

5. Make sure that the pipe connection and nut holding the compost cover goes through the openings and press down on the top part gently.

6. Put the nut holding the compost cover back, as well as the screw holding the top part and the knob.



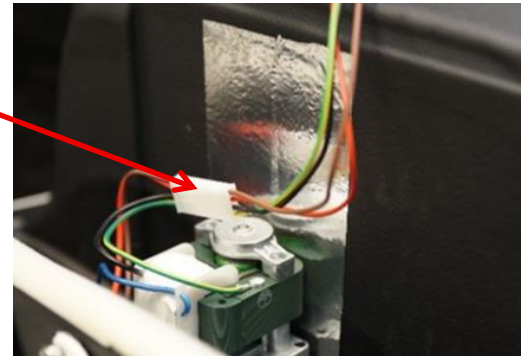
Safety Notice

This appliance must only be installed, serviced, or repaired by a qualified electrician. Improper work may result in injury, damage, or fire.

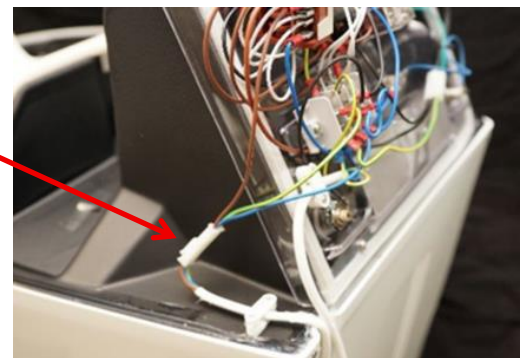
Removing the electrical panel

Remove the top part, see page 3.

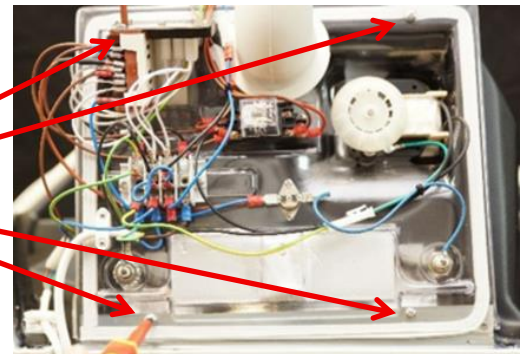
1. Loosen the quick release contact for the mixer motor.



2. Disconnect the quick release contact to the bottom heater.



3. Remove the four screws holding the panel.



4. Remove the panel from the toilet.

5. To put the panel back, follow the steps above in reverse and put the top part back on.

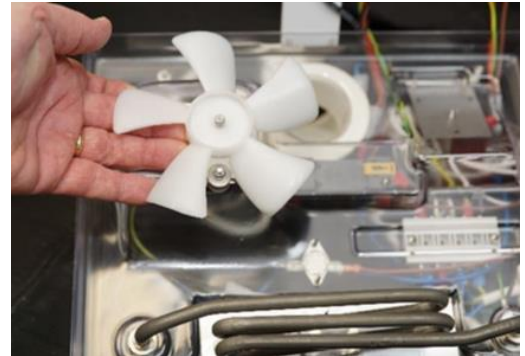
Safety Notice

This appliance must only be installed, serviced, or repaired by a qualified electrician. Improper work may result in injury, damage, or fire.

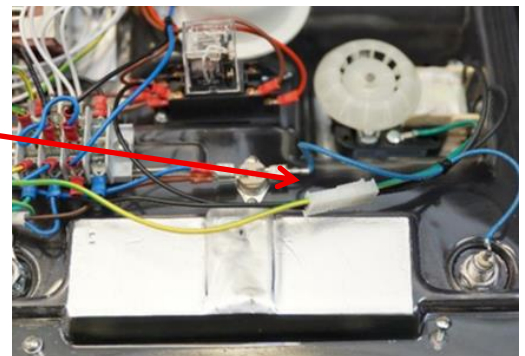
Replacing the fan motor

Remove the top part and the electrical panel (see pages 3 and 4).

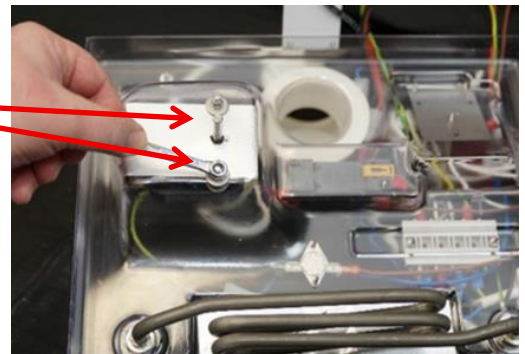
1. Pull the fan blade off the shaft by hand, without prying.



2. Disconnect the quick release contact to the power supply.



3. Remove the two nuts and washers holding the motor.



4. Remove the old motor and mount the new one.

5. Make sure that the rubber gasket is centred.

6. Fasten the two nuts and washers holding the motor. Press the new fan blade onto the shaft, connect the wires, and test the new motor.

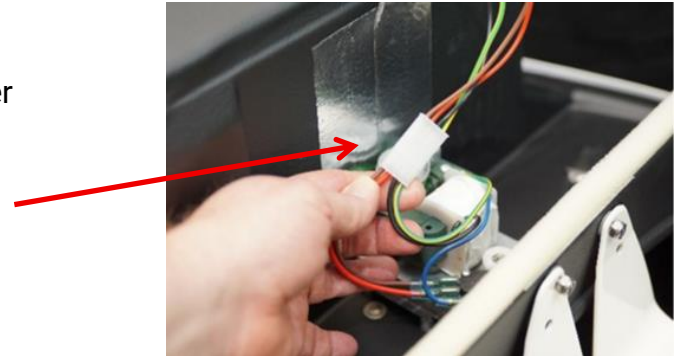
Safety Notice

This appliance must only be installed, serviced, or repaired by a qualified electrician. Improper work may result in injury, damage, or fire.

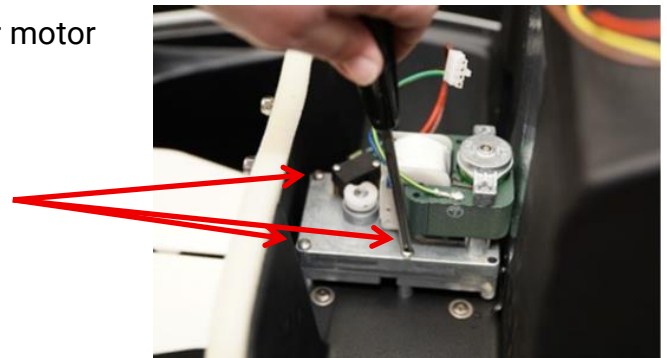
Replacing the mixer motor

Remove the top part (see page 3).

1. Disconnect the quick release to the mixer motor.



2. Loosen the four screws holding the mixer motor (gear box).



3. Lift the mixer motor, straight up.

4. Mount the new motor and follow steps 1 and 2 in reverse to secure.

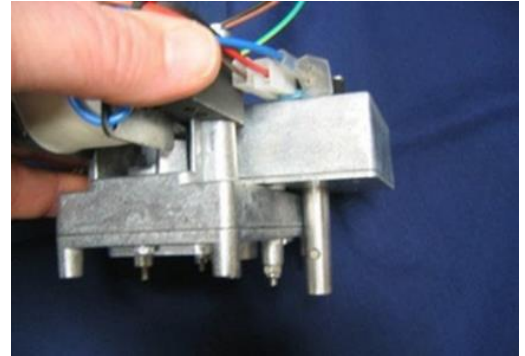
Safety Notice

This appliance must only be installed, serviced, or repaired by a qualified electrician. Improper work may result in injury, damage, or fire.

Replacing the shear pin

Remove the top part (see page 3).

1. Follow steps 1-3 on page 6 to remove the mixer motor.



2. Use a flat surface and place the shaft of the motor on it.

3. Knock the old shear pin out using a hammer and put the new shear pin.

Do NOT use a pointy object (e.g. nail or drill)

4. Knock in the new shear pin and make sure it is centred.



5. Put the motor back and make sure that the top mixing arm is in the correct position (3 o'clock) to the right-hand side, before mounting the motor.

6. Make sure that the compost is porous by using the humus rake and water if too dry. This ensures that the shear pin will not break once more.

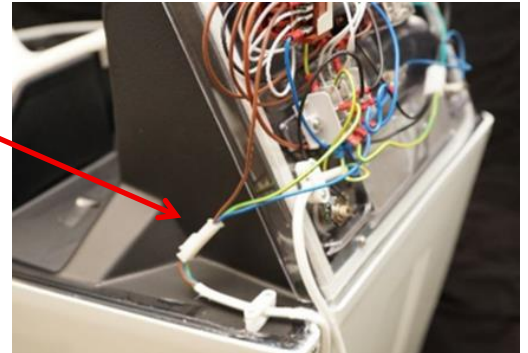
Safety Notice

This appliance must only be installed, serviced, or repaired by a qualified electrician. Improper work may result in injury, damage, or fire.

Replacing the bottom heater

Remove the top part (see page 3).

1. Disconnect the quick release contact to the bottom heater.



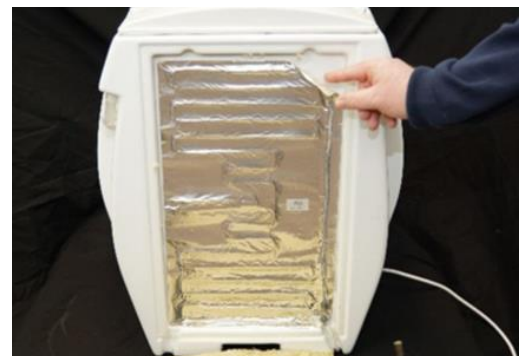
2. Turn the toilet or tilt it so that the bottom is fully accessible.



3. Pull off the cover plate and remove the insulation.



4. Remove the old bottom heater.



Safety Notice

This appliance must only be installed, serviced, or repaired by a qualified electrician. Improper work may result in injury, damage, or fire.

5. Pull off the protective film on the new heater and mount it.
6. Put the insulation in place as well as the cover plate. The cover plate is provided with double-sided tape.
7. Reassemble the system by following the above steps in reverse.
8. Put the heat regulating knob to setting 3. Wait for 10-15 minutes. Put your hand beneath the humus tray and check that you can feel some warmth.



⚠ Safety Notice

This appliance must only be installed, serviced, or repaired by a qualified electrician. Improper work may result in injury, damage, or fire.